

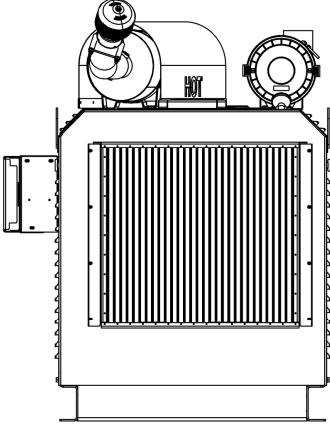
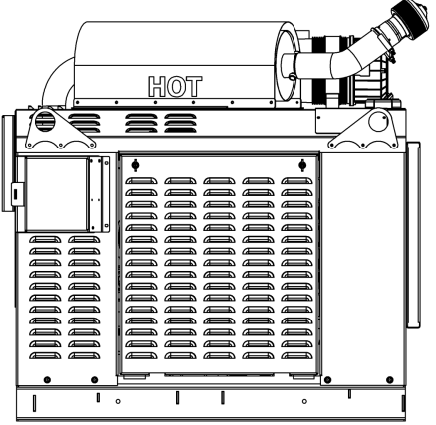
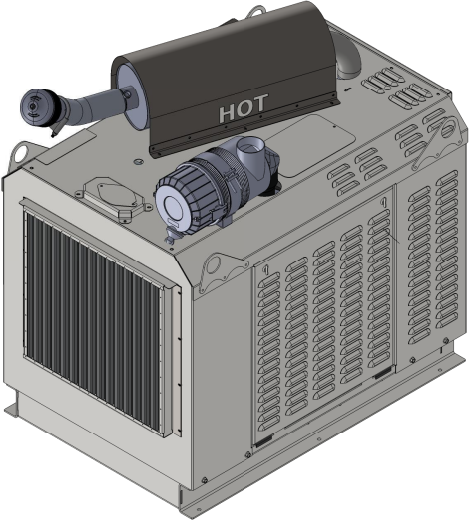
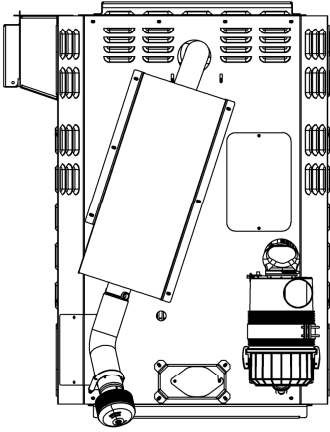
4

3

2

1

REVISIONS					
REV	DESCRIPTION	DATE	DESIGN	DETAIL	APPD
A	INITIAL RELEASE	1/6/2021		MS	MW



 THIRD ANGLE PROJECTION		RC1172 753	A	BANDIT
		PART NUMBER:	REV	CUSTOMER:
MICHIGAN CAT				
TITLE: CHIPPER POWER UNIT				
DESIGNER	DETAILER	DATE	APPROVED	DATE
MS				
MATERIAL:				WEIGHT
FINISH:				LBS
PROPRIETARY AND CONFIDENTIAL THE CONTENTS OF THIS DRAWING ARE THE SOLE PROPERTY OF MICHIGAN CAT AND MACALLISTER MACHINERY. ANY SHARING, OR REPRODUCTION IN PART OR AS A WHOLE WITHOUT THE WRITTEN PERMISSION OF MICHIGAN CAT IS PROHIBITED.		SIZE	DRAWING NUMBER:	REV
		B	RC1172-753 A	
SCALE: 1:16 DO NOT SCALE DRAWING SHEET 1 OF 2				

4

3

2

1

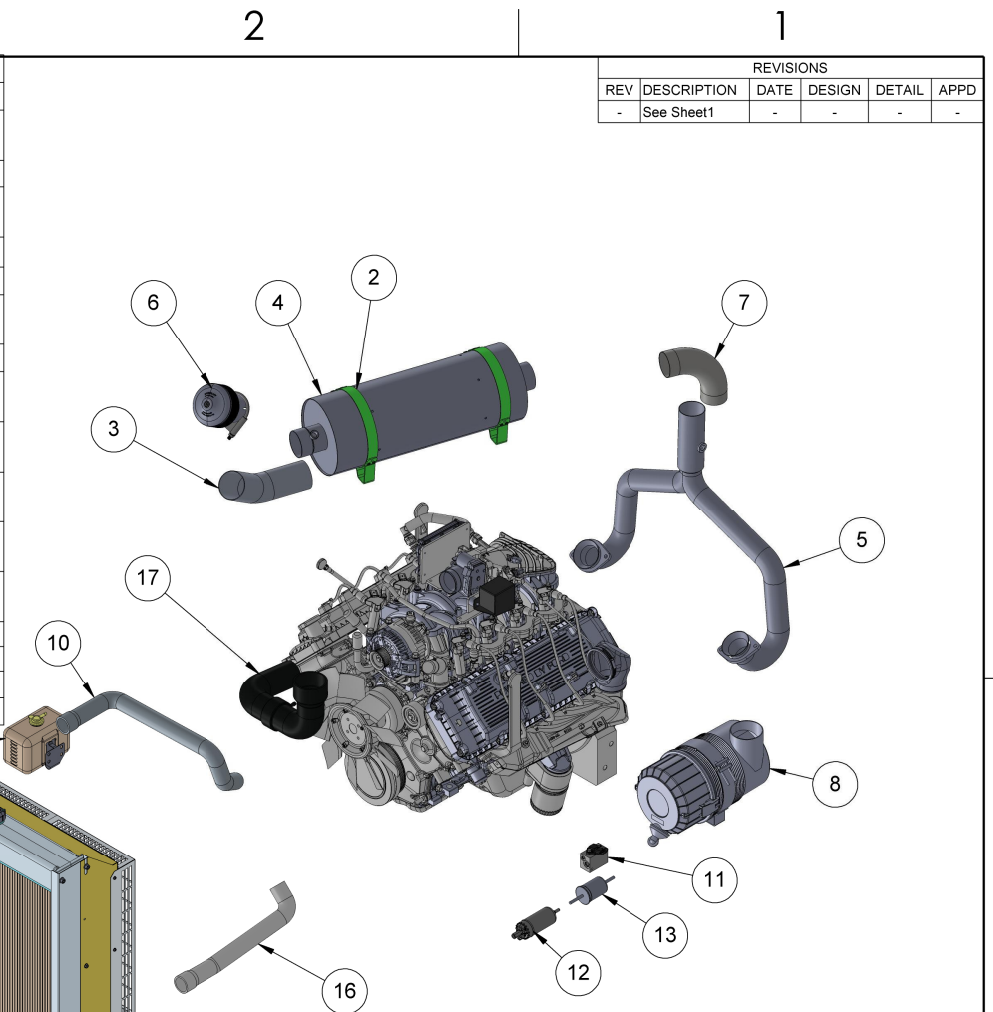
B

B

A

A

ITEM NO.	PART NUMBER	DESCRIPTION	MATERIAL	No Enclosure/QTY.
1	6.2L Power Unit	6.2L Power Unit		1
2	M002120	MOUNTING BAND CLAMP - EXHAUST	Material <not specified>	2
3	MCM-501	RSG862 EXHAUST OUTLET ELBOW	Aluminized Steel	1
4	WSG1068	Cat Muffler - 56GX-MT-2DV1-42	Material <not specified>	1
5	MCM-481	6.2L Ford WYE PIPE		1
6	5S3000U24B	SPARK ARRESTOR		1
7	MCM-482	6.2L EXHAUST ELBOW	Material <not specified>	1
8	68167	6.2L AIR FILTER		1
9	68377-1	6.2L AIR CLEANER ELBOW	Material <not specified>	1
10	68901883		Material <not specified>	1
11	6650030	FUEL BLOCK	Material <not specified>	1
12	7550010	FUEL PUMP	Material <not specified>	1
13	F89Z-9155-A	FUEL FILTER	Material <not specified>	1
14	39000329			1
15	81500003_ASM			1
16	68901513		Material <not specified>	1
17	68901926	FORD 6.2 AIR INTAKE HOSE	Material <not specified>	1



REVISIONS					
REV	DESCRIPTION	DATE	DESIGN	DETAIL	APPD
-	See Sheet1	-	-	-	-

THIRD ANGLE PROJECTION

RC1172 753	A	BANDIT
PART NUMBER:	REV	CUSTOMER:

MICHIGAN CAT

TITLE: CHIPPER POWER UNIT

DESIGNER	DETAILER	DATE	APPROVED	DATE
MS				

MATERIAL: _____ WEIGHT _____ LBS

FINISH: _____

PROPRIETARY AND CONFIDENTIAL
THE CONTENTS OF THIS DRAWING ARE THE SOLE PROPERTY OF MICHIGAN CAT AND MACALLISTER MACHINERY. ANY SHARING, OR REPRODUCTION IN PART OR AS A WHOLE WITHOUT THE WRITTEN PERMISSION OF MICHIGAN CAT IS PROHIBITED.

SIZE	DRAWING NUMBER:	REV
B	RC1172-753 A	

SCALE: 1:14 DO NOT SCALE DRAWING SHEET 2 OF 2

4

3

2

1

B

B

A

A

4

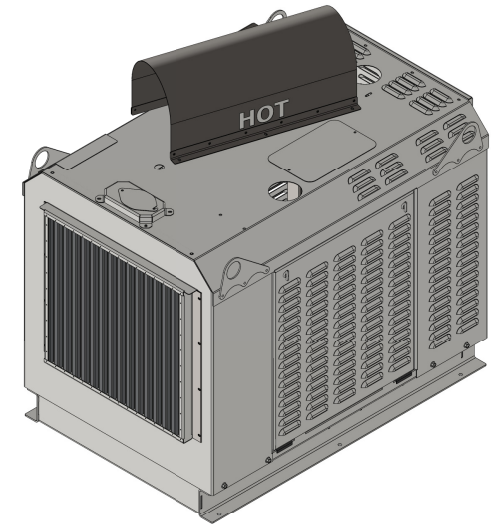
3

2


1

ITEM NO.	PART NUMBER	DESCRIPTION	MATERIAL	No Hardware/QTY.
1	MCM-437-11	ENGINE MOUNTED RAD SUPPORT BRACKET		1
2	MCM-437-12	RAD MOUNTED SUPPORT BRACKET		1
3	MCM-437-13	RAIL - LH BASE		1
4	MCM-437-14	RAIL - RH BASE		1
5	MCM-437-16	RAD MOUNTING RAIL		1
6	MCM-437-17	CENTER ENGINE MOUNTING RAIL		1
7	37USQWN			15
8	MCM-437-110	RAD SUPPORT		2
9	MCM-437-15	FLYWHEEL HOUSING MOUNTING RAIL		1
10	MCM-437-120	FUEL BLOCK MOUNTING BRACKET		1
11	MCM-437-18_1	LH ENGINE BLOCK MOUNT PIECE		1
12	MCM-437-182	LH ENGINE BLOCK MOUNT PIECE		2
13	MCM-437-191	RH ENGINE BLOCK MOUNT PIECE		1
14	MCM-437-192	RH ENGINE BLOCK MOUNT PIECE		1
15	MCM-437-193	RH ENGINE BLOCK MOUNT PIECE		1
16	MCM-437-194	RH ENGINE BLOCK MOUNT PIECE		1
17	MCM-437-2131	DEBRIS SCREEN		1
18	MCM-437-2132			1
19	MCM-437-2133			1
20	MCM-437-2134			1
21	MCM-437-2135			1
22	MCM-437-212	DEBRIS SCREEN MOUNT		2
23	MCM-437-211-1	FRONT PANEL NO RIVETS		1
24	25USRRNS	TWIST RESISTANT RIVET NUT - Open End, 1/4"-20 Interior Thread, .027"-.165" Material Thickness		60
25	MCM-437-234	HEAT SHIELD - EXHAUST MUFFLER		1
26	MCM-437-236	RAD OVERFLOW COVER		1
27	MCM-437-2371	RAD FILL COVER MOUNT BRACKET - NO RIVETS		1
28	MCM-437-242	RH EXHAUST HEAT SHIELD BRACKET		1
29	MCM-437-243	LH EXHAUST HEAT SHIELD BRACKET		1
30	MCM-437-244	EXHAUST HEAT SHIELD BRACKET		2
31	MCM-437-239	FUSE BOX ACCESS COVER		1
32	MCM-437-233	RAD FILL COVER		1
33	MCM-437-231_1	TOP PANEL - NO RIVETS		1
34	MCM-437-241	ENCLOSURE DOOR		2
35	1820A260	DOOR LATCH		4
36	MCM-437-221			1
37	MCM-437-29			1
38	MCM-437-261	REAR LH PANEL - NO RIVETS		1
39	MCM-437-271	REAR RH PANEL - NO RIVETS		1
40	MCM-437-226_1	HEAT SHIELD - WIRING - NO RIVETS		1
41	MCM-437-2261	HEAT SHIELD - CLUTCH HANDLE - NO RIVETS		1
42	MCM-437-3	LIFTING EYE		4
43	25U75TMSSYZ	1/4"-20 THREAD		4
44	25U75FB8Z	1/4" - 20 THREAD		57
45	25U100FB8Z	1/4"-20 THREAD		12
46	25UNIFN	LOCK NUT - 1/4"-20 THREAD		4
47	MCM-437-BDT-11		Material <not specified>	1
48	MCM-437-BDT-21		Material <not specified>	1
49	MCM-437-BDT-31		Material <not specified>	1
50	MCM-404-223	PANEL COVER	ASTM A36 Steel	1
51	MCM-404-222	PANEL MOUNTING BRACKET	ASTM A36 Steel	1

REVISIONS					
REV	DESCRIPTION	DATE	DESIGN	DETAIL	APPD



MCM-437
SCALE 1:16

 THIRD ANGLE PROJECTION		MCM 437	A	
VERIFY REV PRIOR TO USE. DOCUMENT IS ELECTRONICALLY CONTROLLED. DEBURR AND BREAK SHARP CORNERS AND EDGES. PART NUMBER MUST APPEAR ON PART. GD&T COMPLIANT WITH ASME Y14.5-2009.		PART NUMBER:	REV	CUSTOMER:
MICHIGAN CAT				
TITLE:				
DIMENSIONS ARE IN INCHES DIMENSIONS IN [] ARE IN mm				
TOLERANCES:				
HOLE ±0.015 (0.381)				
ANGULAR: ±1.00 (25.4)				
X X ±0.06 (1.524)				
X X X ±0.03 (0.762)				
X X X X ±0.01 (0.254)				
PROPRIETARY AND CONFIDENTIAL THE CONTENTS OF THIS DRAWING ARE THE SOLE PROPERTY OF MICHIGAN CAT AND MACALLISTER MACHINERY. ANY SHARING, OR REPRODUCTION IN PART OR AS A WHOLE WITHOUT THE WRITTEN PERMISSION OF MICHIGAN CAT IS PROHIBITED.				
DESIGNER	DETAILER	DATE	APPROVED	DATE
BH	MS	12/3/2020		
MATERIAL:				WEIGHT
FINISH:				LBS
SIZE	DRAWING NUMBER:		REV	
B	MCM-437		A	
SCALE: 1:48 DO NOT SCALE DRAWING SHEET 1 OF 7				

4

3

2

1

4

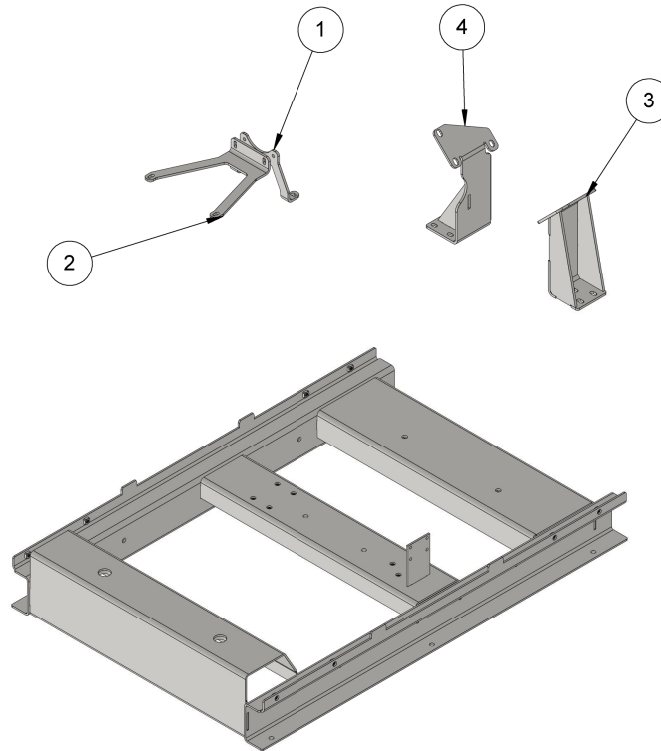
3

2

1

ITEM NO.	PART NUMBER	DESCRIPTION	MATERIAL	NO HARDWARE/QTY.
1	MCM-437-11	ENGINE MOUNTED RAD SUPPORT BRACKET		1
2	MCM-437-12	RAD MOUNTED SUPPORT BRACKET		1
3	MCM-437-18	LH ENGINE BLOCK MOUNT		1
4	MCM-437-19	RH ENGINE BLOCK MOUNT		1
5	MCM-437-1	enclosure assembled base		1

REVISIONS					
REV	DESCRIPTION	DATE	DESIGN	DETAIL	APPD
-	See Sheet1	-	-	-	-



		MCM 437	A	
THIRD ANGLE PROJECTION		PART NUMBER:	REV	CUSTOMER:
MICHIGAN CAT				
TITLE:				
DESIGNER BH		DETAILER MS		DATE 12/3/2020
MATERIAL:			APPROVED	DATE
FINISH:				WEIGHT LBS
SIZE B		DRAWING NUMBER: MCM-437		REV A
SCALE: 1:12 DO NOT SCALE DRAWING SHEET 2 OF 7				

VERIFY REV PRIOR TO USE. DOCUMENT IS ELECTRONICALLY CONTROLLED. DEBURR AND BREAK SHARP CORNERS AND EDGES. PART NUMBER MUST APPEAR ON PART. GD&T COMPLIANT WITH ASME Y14.5-2009.

DIMENSIONS ARE IN INCHES
DIMENSIONS IN [] ARE IN mm
TOLERANCES:
HOLE ±0.015 (0.381)
ANGULAR: ±1.00 (25.4)
XX ±0.06 (1.524)
XXX ±0.03 (0.762)
X.XXX ±0.01 (0.254)

PROPRIETARY AND CONFIDENTIAL
THE CONTENTS OF THIS DRAWING ARE THE SOLE PROPERTY OF MICHIGAN CAT AND MACALLISTER MACHINERY. ANY SHARING, OR REPRODUCTION IN PART OR AS A WHOLE WITHOUT THE WRITTEN PERMISSION OF MICHIGAN CAT IS PROHIBITED.

4

3

2

1

4

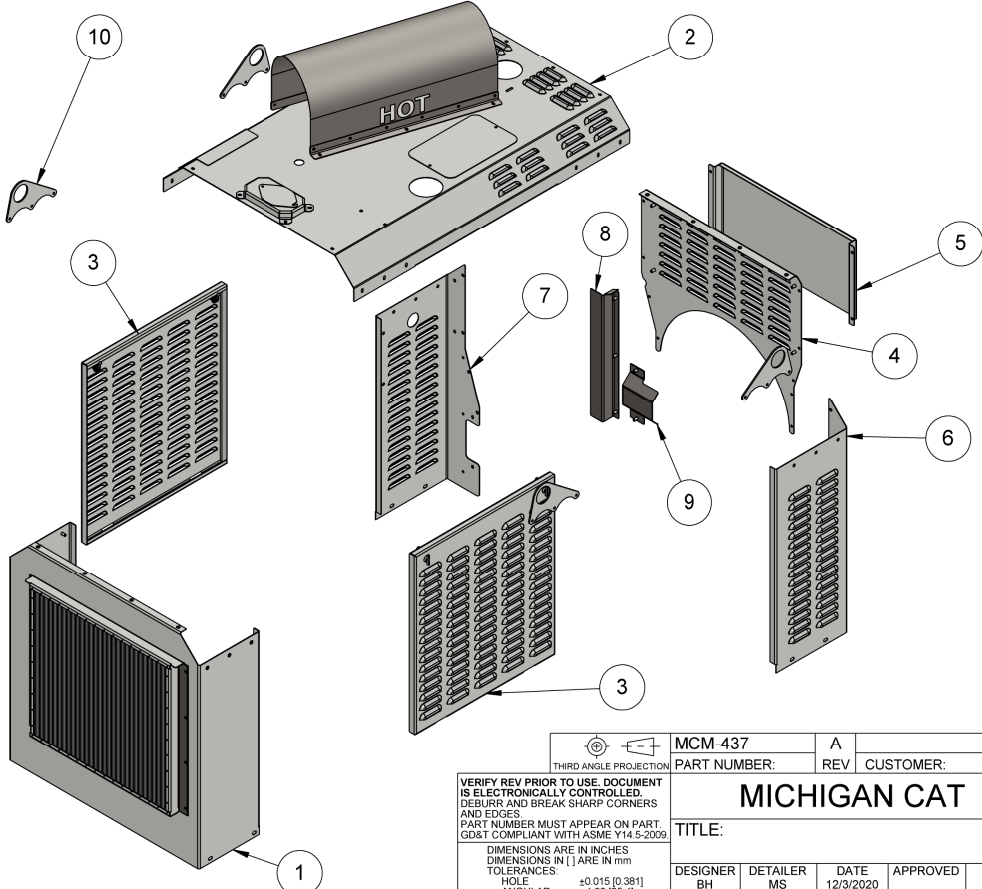
3

2

1

ITEM NO.	PART NUMBER	DESCRIPTION	MATERIAL	QTY.
1	MCM-437-21	RAD PANEL ASSEMBLY		1
2	MCM-437-23	TOP PANEL ASSEMBLY		1
3	MCM-437-24	ENCLOSURE DOOR ASSEMBLY		2
4	MCM-437-25	REAR PANEL ASSEMBLY		1
5	MCM-437-29			1
6	MCM-437-26	REAR LH PANEL ASSEMBLY		1
7	MCM-437-27	REAR RH PANEL ASSEMBLY		1
8	MCM-437-226	HEAT SHIELD - WIRING		1
9	MCM-437-227	HEAT SHIELD - CLUTCH HANDLE		1
10	MCM-437-3	LIFTING EYE		4

REVISIONS					
REV	DESCRIPTION	DATE	DESIGN	DETAIL	APPD
-	See Sheet1	-	-	-	-



THIRD ANGLE PROJECTION

MCM 437		A	
PART NUMBER:	REV	CUSTOMER:	
MICHIGAN CAT			
TITLE:			
DESIGNER	DETAILER	DATE	APPROVED
BH	MS	12/3/2020	
MATERIAL:			WEIGHT
FINISH:			LBS
SIZE		DRAWING NUMBER:	REV
B		MCM-437	A
SCALE: 1:16 DO NOT SCALE DRAWING SHEET 3 OF 7			

VERIFY REV PRIOR TO USE. DOCUMENT IS ELECTRONICALLY CONTROLLED. DEBURR AND BREAK SHARP CORNERS AND EDGES. PART NUMBER MUST APPEAR ON PART. GD&T COMPLIANT WITH ASME Y14.5-2009.

DIMENSIONS ARE IN INCHES
DIMENSIONS IN [] ARE IN mm
TOLERANCES:
HOLE: ±0.015 (0.381)
ANGULAR: ±1.00 (25.4)
X.X: ±0.06 (1.524)
X.XX: ±0.03 (0.762)
X.XXX: ±0.01 (0.254)

PROPRIETARY AND CONFIDENTIAL
THE CONTENTS OF THIS DRAWING ARE THE SOLE PROPERTY OF MICHIGAN CAT AND MACALLISTER MACHINERY. ANY SHARING, OR REPRODUCTION IN PART OR AS A WHOLE WITHOUT THE WRITTEN PERMISSION OF MICHIGAN CAT IS PROHIBITED.

4

3

2

1

4

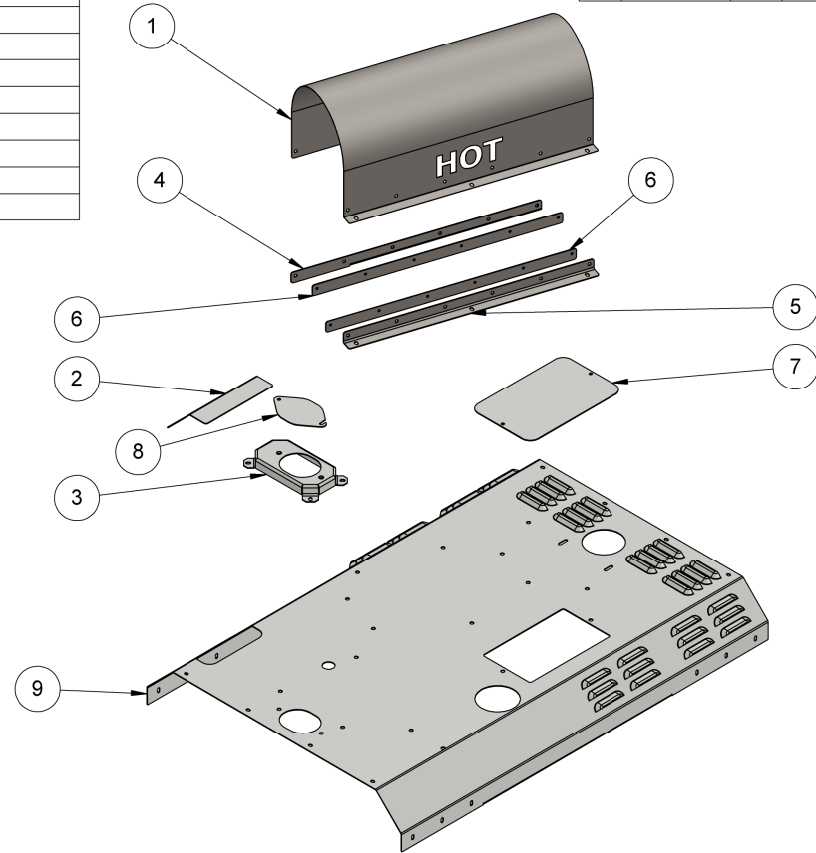
3

2

1

ITEM NO.	PART NUMBER	DESCRIPTION	MATERIAL	NO HARDWARE/QTY.
1	MCM-437-234	HEAT SHIELD - EXHAUST MUFFLER		1
2	MCM-437-236	RAD OVERFLOW COVER		1
3	MCM-437-237	RAD FILL COVER MOUNT BRACKET		1
4	MCM-437-242	RH EXHAUST HEAT SHIELD BRACKET		1
5	MCM-437-243	LH EXHAUST HEAT SHIELD BRACKET		1
6	MCM-437-244	EXHAUST HEAT SHIELD BRACKET		2
7	MCM-437-239	FUSE BOX ACCESS COVER		1
8	MCM-437-233	RAD FILL COVER		1
9	MCM-437-231	TOP PANEL		1

REVISIONS					
REV	DESCRIPTION	DATE	DESIGN	DETAIL	APPD
-	See Sheet1	-	-	-	-



MCM 437	A	
PART NUMBER:	REV	CUSTOMER:

VERIFY REV PRIOR TO USE. DOCUMENT IS ELECTRONICALLY CONTROLLED. DEBURR AND BREAK SHARP CORNERS AND EDGES. PART NUMBER MUST APPEAR ON PART. GD&T COMPLIANT WITH ASME Y14.5-2009.

DIMENSIONS ARE IN INCHES
DIMENSIONS IN [] ARE IN mm
TOLERANCES:
HOLE: ±0.015 (0.381)
ANGULAR: ±1.00 (25.4)
XX: ±0.06 (1.524)
XXX: ±0.03 (0.762)
X-XXX: ±0.01 (0.254)

PROPRIETARY AND CONFIDENTIAL
THE CONTENTS OF THIS DRAWING ARE THE SOLE PROPERTY OF MICHIGAN CAT AND MACALLISTER MACHINERY. ANY SHARING, OR REPRODUCTION IN PART OR AS A WHOLE WITHOUT THE WRITTEN PERMISSION OF MICHIGAN CAT IS PROHIBITED.

MICHIGAN CAT				
TITLE:				
DESIGNER	DETAILER	DATE	APPROVED	DATE
BH	MS	12/3/2020		
MATERIAL:				WEIGHT
FINISH:				LBS
SIZE	DRAWING NUMBER:		REV	
B	MCM-437		A	
SCALE: 1:12 DO NOT SCALE DRAWING SHEET 4 OF 7				

4

3

2

1

4

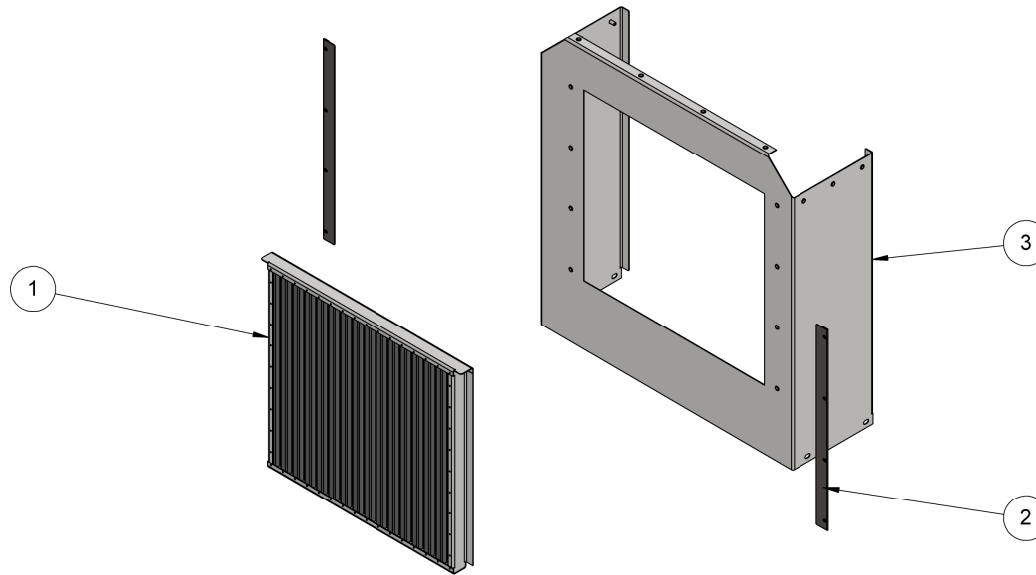
3

2

1

ITEM NO.	PART NUMBER	DESCRIPTION	MATERIAL	QTY.
1	MCM-437-213	DEBRIS SCREEN ASSEMBLY		1
2	MCM-437-212	DEBRIS SCREEN MOUNT		2
3	MCM-437-211	FRONT PANEL		1

REVISIONS					
REV	DESCRIPTION	DATE	DESIGN	DETAIL	APPD
-	See Sheet1	-	-	-	-



MCM 437	A	
PART NUMBER:	REV	CUSTOMER:

VERIFY REV PRIOR TO USE. DOCUMENT IS ELECTRONICALLY CONTROLLED. DEBURR AND BREAK SHARP CORNERS AND EDGES. PART NUMBER MUST APPEAR ON PART. GD&T COMPLIANT WITH ASME Y14.5-2009.

DIMENSIONS ARE IN INCHES
DIMENSIONS IN [] ARE IN mm
TOLERANCES:
HOLE ±0.015 (0.381)
ANGULAR: ±1.00 (25.4)
X.X ±0.06 (1.524)
X.XX ±0.03 (0.762)
X.XXX ±0.01 (0.254)

PROPRIETARY AND CONFIDENTIAL
THE CONTENTS OF THIS DRAWING ARE THE SOLE PROPERTY OF MICHIGAN CAT AND MACALLISTER MACHINERY. ANY SHARING, OR REPRODUCTION IN PART OR AS A WHOLE WITHOUT THE WRITTEN PERMISSION OF MICHIGAN CAT IS PROHIBITED.

MICHIGAN CAT				
TITLE:				
DESIGNER	DETAILER	DATE	APPROVED	DATE
BH	MS	12/3/2020		
MATERIAL:				WEIGHT
FINISH:				LBS
SIZE	DRAWING NUMBER:		REV	
B	MCM-437		A	
SCALE: 1:12 DO NOT SCALE DRAWING SHEET 5 OF 7				

4

3

2

1

4

3

2

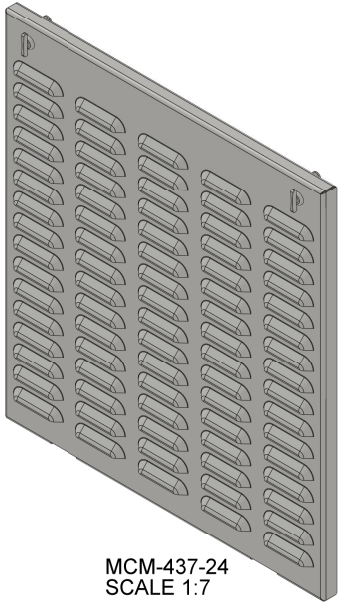
1

ITEM NO.	PART NUMBER	DESCRIPTION	MATERIAL	QTY.
1	MCM-437-241	ENCLOSURE DOOR		1
2	1820A260	DOOR LATCH		2

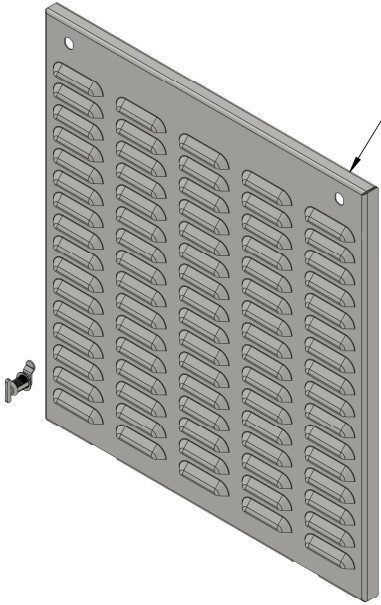
REVISIONS					
REV	DESCRIPTION	DATE	DESIGN	DETAIL	APPD
-	See Sheet1	-	-	-	-

2

1



MCM-437-24
SCALE 1:7



THIRD ANGLE PROJECTION		MCM 437	A	
		PART NUMBER:	REV	CUSTOMER:
MICHIGAN CAT				
TITLE:				
DESIGNER	DETAILER	DATE	APPROVED	DATE
BH	MS	12/3/2020		
MATERIAL:				WEIGHT
FINISH:				LBS
SIZE		DRAWING NUMBER:		REV
B		MCM-437		A
SCALE: 1:7		DO NOT SCALE DRAWING SHEET 6 OF 7		

VERIFY REV PRIOR TO USE. DOCUMENT IS ELECTRONICALLY CONTROLLED. DEBURR AND BREAK SHARP CORNERS AND EDGES. PART NUMBER MUST APPEAR ON PART. GD&T COMPLIANT WITH ASME Y14.5-2009

DIMENSIONS ARE IN INCHES
DIMENSIONS IN [] ARE IN mm
TOLERANCES:
HOLE: ±0.015 (0.381)
ANGULAR: ±1.00 (25.4)
XX: ±0.06 (1.524)
XXX: ±0.03 (0.762)
X-XXX: ±0.01 (0.254)

PROPRIETARY AND CONFIDENTIAL
THE CONTENTS OF THIS DRAWING ARE THE SOLE PROPERTY OF MICHIGAN CAT AND MACALLISTER MACHINERY. ANY SHARING, OR REPRODUCTION IN PART OR AS A WHOLE WITHOUT THE WRITTEN PERMISSION OF MICHIGAN CAT IS PROHIBITED.

4

3

2

1

B

B

A

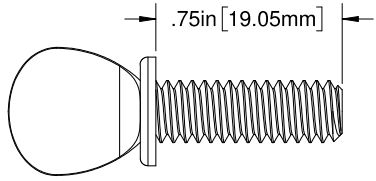
A

4

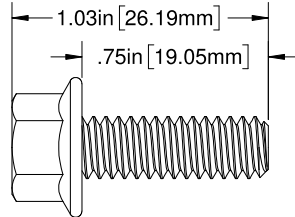
3

2

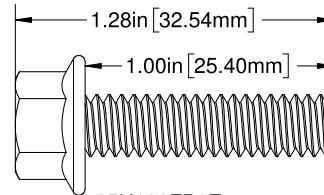
1



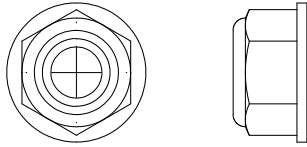
25U75TMSSYZ
1/4"-20 THREAD
SCALE 2:1



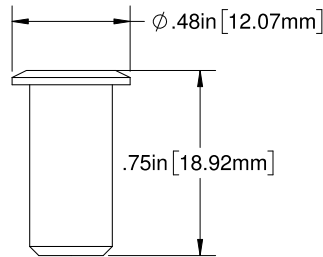
25U75FB8Z
1/4"-20 THREAD
SCALE 2:1



25U100FB8Z
1/4"-20 THREAD
SCALE 2:1



25UNIFN
LOCK NUT - 1/4"-20 THREAD
SCALE 2:1



25USRRNS
TWIST RESISTANT RIVET NUT - OPEN
END, 1/4"-20 INTERIOR THREAD, .027"-
.165" MATERIAL THICKNESS
SCALE 2:1

REVISIONS					
REV	DESCRIPTION	DATE	DESIGN	DETAIL	APPD
-	See Sheet1	-	-	-	-

MCM-437		A	
PART NUMBER:	REV	CUSTOMER:	

THIRD ANGLE PROJECTION

VERIFY REV PRIOR TO USE. DOCUMENT IS ELECTRONICALLY CONTROLLED. DEBURR AND BREAK SHARP CORNERS AND EDGES. PART NUMBER MUST APPEAR ON PART. GD&T COMPLIANT WITH ASME Y14.5-2009.

MICHIGAN CAT

TITLE:

DESIGNER	DETAILER	DATE	APPROVED	DATE
BH	MS	12/3/2020		

WEIGHT

FINISH:

LBS

PROPRIETARY AND CONFIDENTIAL

THE CONTENTS OF THIS DRAWING ARE THE SOLE PROPERTY OF MICHIGAN CAT AND MACALISTER MACHINERY. ANY SHARING, OR REPRODUCTION IN PART OR AS A WHOLE WITHOUT THE WRITTEN PERMISSION OF MICHIGAN CAT IS PROHIBITED.

SIZE

DRAWING NUMBER:

REV

B

MCM-437

A

SCALE: 1:0.5 [DO NOT SCALE DRAWING] SHEET 7 OF 7

4

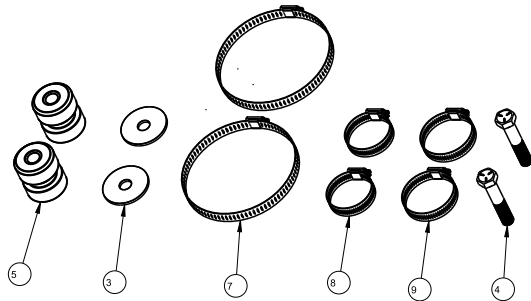
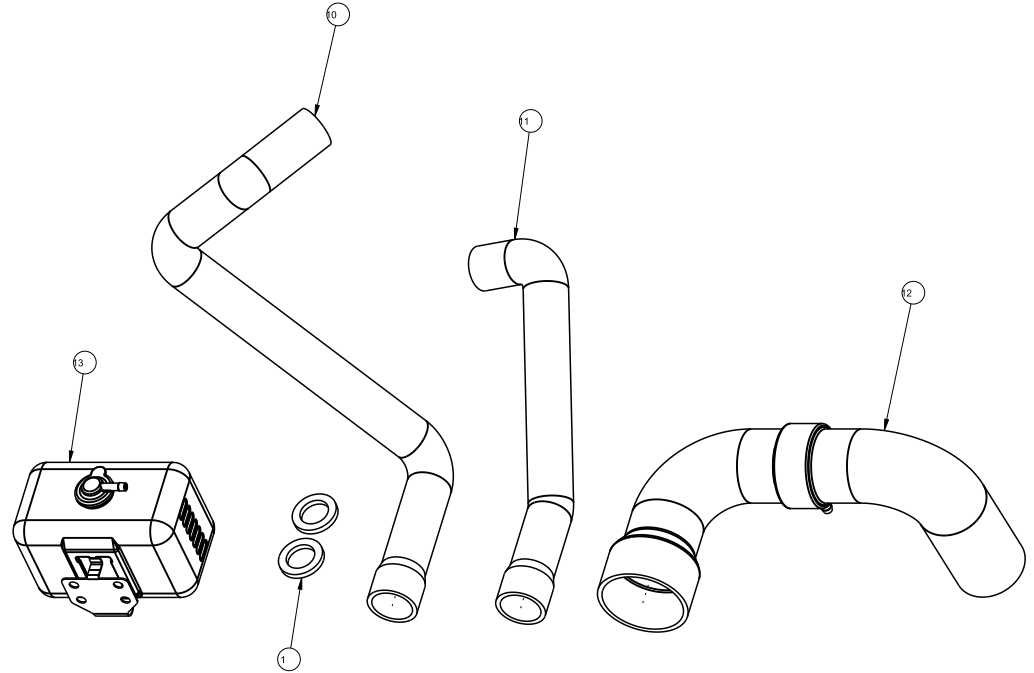
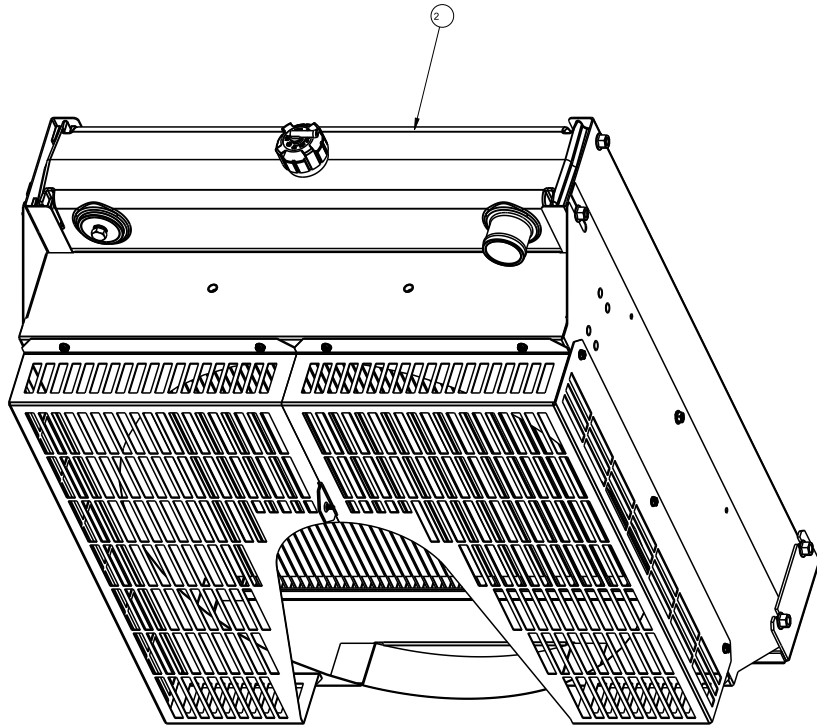
3


2

1

COATING:

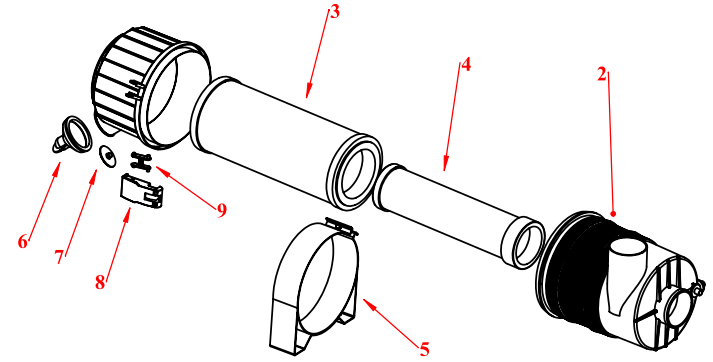
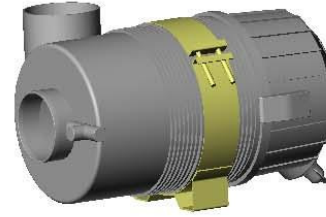
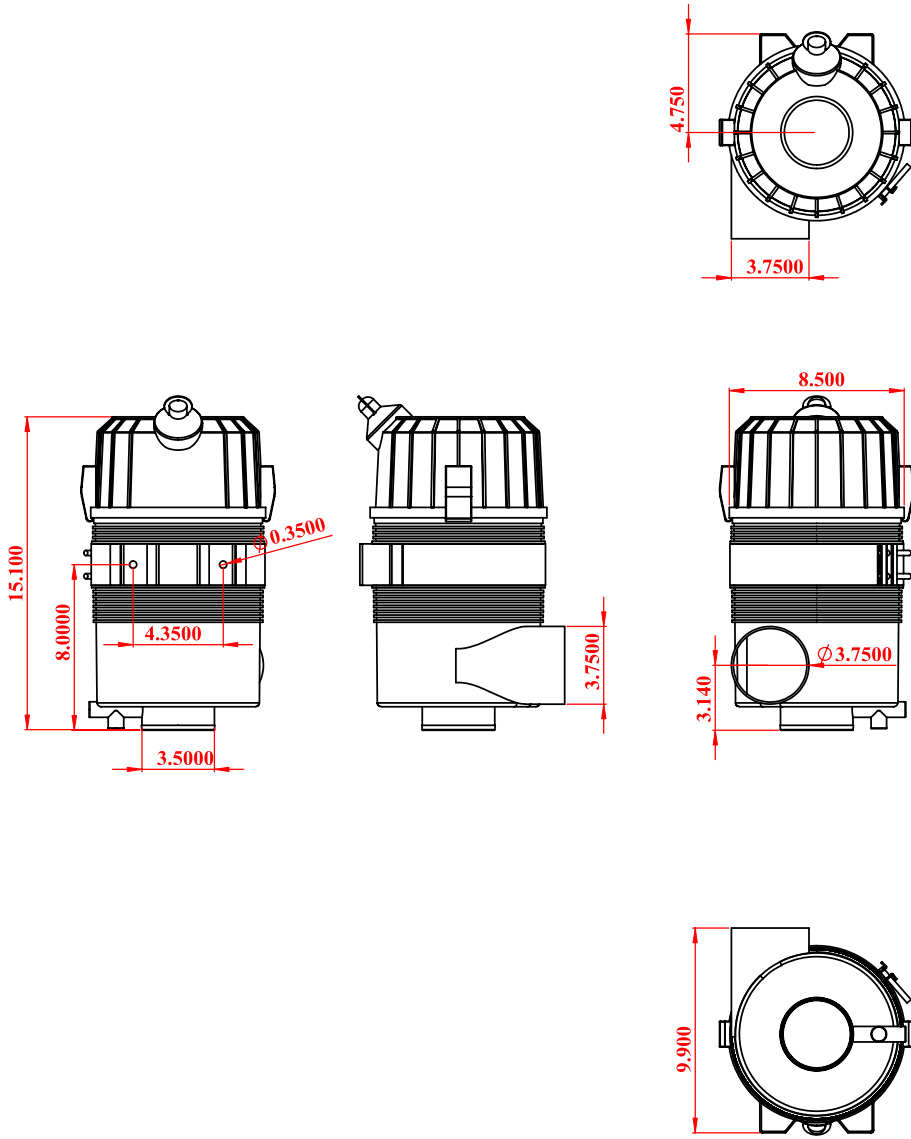
BILL OF MATERIALS FOR RCP ASSY: 99800212			
ITEM	RCP PRT NUMBER	REV	DESCRIPTION
1	20900003	3	Bracket, Misc. Spacer, Dia. 49 x 6.35
2	39000329	1	COMPLETE, OEM, RCP-18-117
3	64700096	4	Large OD Plain Washer, 0.500 x 2.00 x 0.125
4	64900093	4	Hex Cap Screw, 1/2-13 x 2.75
5	65500002	4	Isolator, 46.4mm, 51.21mm, 1/2-13
6	68900080	1	Box, Plain, Kraft, 506 x 641 x 267
7	68800051	1	Clamp, Hose, Worm-Drive, 48-127 OD
8	68800053	1	Clamp, Hose, Worm-Drive, 27-51 OD
9	68800059	1	CLAMP, HOSE, WORM-DRIVE, 33-57 OD
10	68901883	1	Hose, 20R4, Upper, 44.45 x 38.1mm ID, RCP-18-117
11	68901884	1	Hose, 20R4, Lower, 44.45 x 38.1mm ID, RCP-18-117
12	68901926	1	Hose, Air Intake, 68.5 ID, 88.9 ID, RCP-19-085
13	81500003	1	Assembly, Over-Flow Bottle, 2 liter



 <small>TOLERANCE: (UNLESS SPECIFIED) X.X (X) ± 0.1 (1) X.X (X) ± 0.05 (1/2) (5/8) X.XX (X) ± 0.005 (1/32) ANG ± 0.1</small>	<small>REVISION: 1</small> <small>DATE: 10 Sept 19</small>	<small>RELEASE LEVEL: Design</small> <small>SCALE: 0.250</small>	<small>UNITS: MM (INCH)</small>
	<small>TITLE: Package, Complete, RCP-19-106</small> <small>NOTE: THIS DRAWING CONTAINS PROPRIETARY INFORMATION WHICH MAY NOT BE DISCLOSED TO OTHERS NOR USED FOR MANUFACTURE WITHOUT WRITTEN PERMISSION FROM RICHARDSON COOLING PACKAGES.</small>		
<small>MATL:</small>		<small>DRAWN BY: FZ</small>	



Part #		Description	Quantity
68160-1	1	3.75-FW-Rear Cap	1
N/A	2	3.75-FW Body	1
68330	3	3.75-E1 Element	1
68370	4	3.75-E2 Element	1
68245	5	3.75 Mounting Bracket	1
68210	6	Large External Evacuator Valve	1
68213	7	Large Internal Evacuator Valve (opt)	1
68214	8	Plastic Clamp	2
68215	9	Plastic Clamp Hinge	2



PROPRIETARY AND CONFIDENTIAL
 THE INFORMATION CONTAINED IN THIS DRAWING IS THE SOLE PROPERTY OF ENGINEER CLEAN AIR SYSTEMS. NO PART OF THIS DRAWING IS TO BE REPRODUCED OR TRANSMITTED IN ANY FORM OR BY ANY MEANS, ELECTRONIC OR MECHANICAL, INCLUDING PHOTOCOPYING, RECORDING, OR BY ANY INFORMATION STORAGE AND RETRIEVAL SYSTEM, WITHOUT THE WRITTEN PERMISSION OF ENGINEER CLEAN AIR SYSTEMS. PROPRIETARY.

UNLESS OTHERWISE SPECIFIED:		DATE	
DRAWINGS ARE IN INCHES	DESKTOP	9-24-2007	
TO DIMENSIONS	CHECKED		
FRAC TIONS	DESIGNED		
ANGULAR DIMENSIONS	BID		
TWO PLACE DECIMALS	TRAC		
THREE PLACE DECIMALS	ENG APPR		
	Q.A.		
	COMMENTS		
INSPECTED (DATE)			
TESTED (DATE)			
NEXT ASSY	USED ON		
APPLICATION	FRSH		

engineaire
 Make Us Smarter

3.75-FW Parts

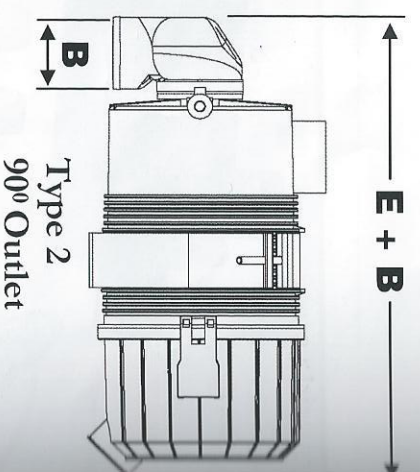
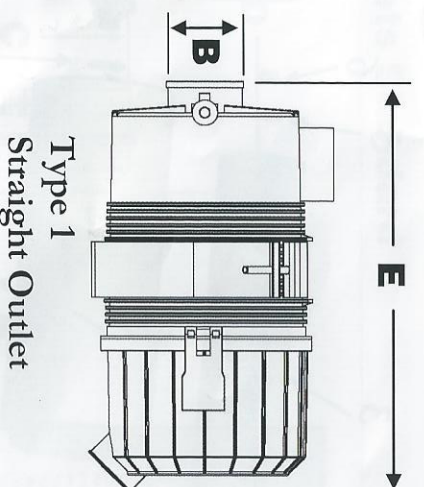
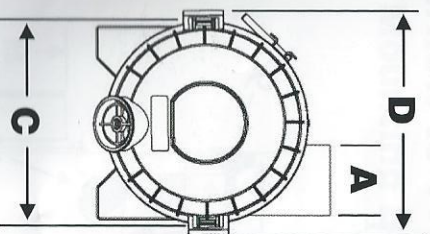
SIZE: DWG. NO. **D** REV

SCALE: 1:5 SHEET 1 OF 1

Plastic Magna Seal Air Cleaners



Internal or External Evacuator Valve
High Strength Polymer
Working Temp -40c to +80c (-40F to 176F)
Design Compatibility with other Manufacturers
Industry Standard elements
Can be Mounted Vertical or Horizontal



Air Cleaner Assembly

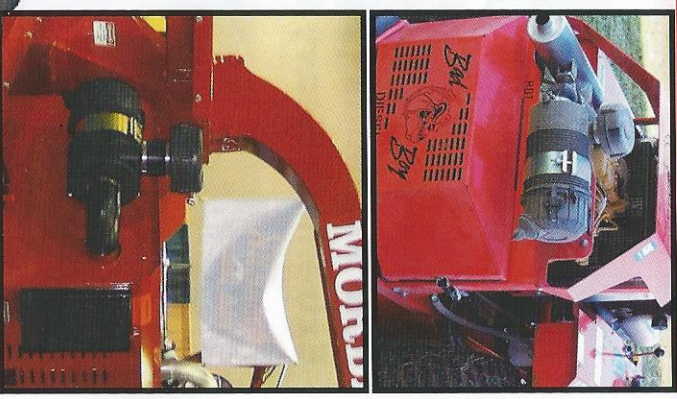
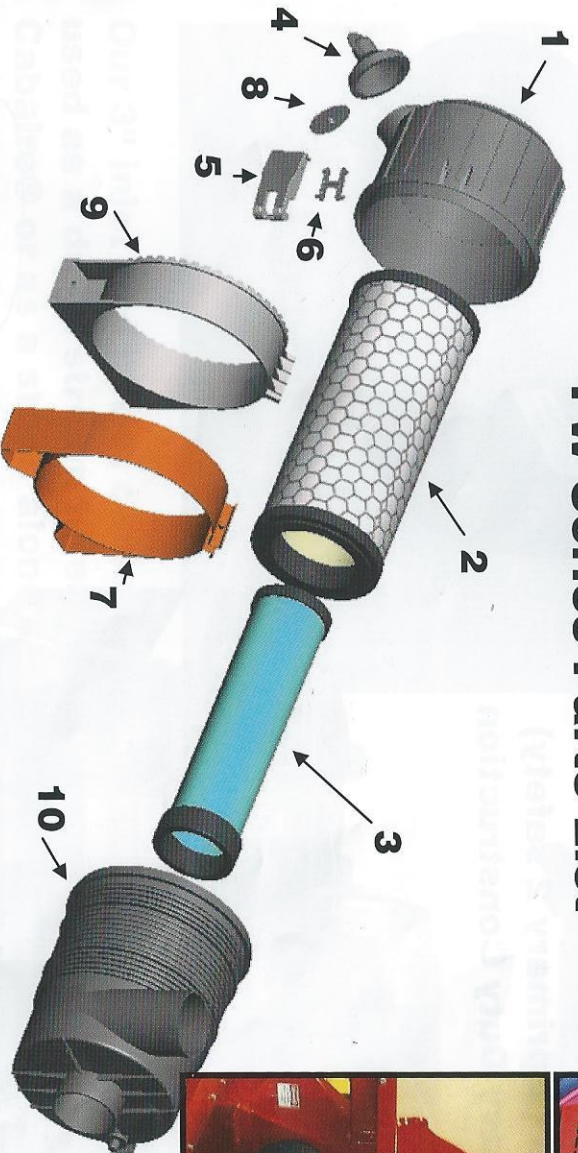
Model Number	Part Number	Type	Initial Restriction					A		B		C		D		E		
			6" H2O CFM	8" H2O CFM	10" H2O CFM	OD Inlet	OD Outlet	inch	mm	inch	mm	inch	mm	inch	mm	inch	mm	
2s-FW-E1	68110	1	75	2.1	90	2.5	105	3.0	2.00	51	1.75	45	4.8	122	6.14	156	8.98	228
2s-FW-E2	68111	1	65	1.8	75	2.1	85	2.4	2.00	51	1.75	45	4.80	122	6.14	156	8.98	228
2s-FW-E1-90	68103	2	63	1.7	73	2.0	82	2.3	2.00	51	1.75	45	4.80	122	6.14	156	10.43	265
2s-FW-E2-90	68107	2	53	1.5	63	1.8	71	2.0	2.00	51	1.75	45	4.80	122	6.14	156	10.43	265
2-FW-E1	68120	1	100	2.8	115	3.3	130	3.7	2.00	51	2.00	51	5.75	146	7.09	180	13.39	340
2-FW-E2	68130	1	90	2.5	105	3.0	115	3.3	2.00	51	2.00	51	5.75	146	7.09	180	13.39	340
2-FW-E1-90	68116	2	88	2.4	102	2.9	113	3.2	2.00	51	2.00	51	5.75	146	7.09	180	14.96	380
2-FW-E2-90	68127	2	77	2.2	92	2.6	103	2.9	2.00	51	2.00	51	5.75	146	7.09	180	14.96	380
2.5-FW-E1	68132	1	150	4.2	175	5.0	195	5.5	2.50	63.5	2.50	63.5	6.89	175	8.15	207	14.13	359
2.5-FW-E2	68133	1	145	4.1	165	4.7	185	5.2	2.50	63.5	2.50	63.5	6.89	175	8.15	207	14.13	359
2.5-FW-E1-90	68131	2	134	3.8	156	4.4	175	5.0	2.50	63.5	2.50	63.5	6.89	175	8.15	207	16.22	412
2.5-FW-E2-90	68134	2	127	3.6	148	4.2	168	4.7	2.50	63.5	2.50	63.5	6.89	175	8.15	207	16.22	412
3-FW-E1	68140	1	160	4.5	190	5.4	210	5.9	3.00	76	3.00	76	7.24	184	8.58	218	14.57	370
3-FW-E2	68150	1	150	4.2	170	4.8	190	5.4	3.00	76	3.00	76	7.24	184	8.58	218	14.57	370
3-FW-E1-90	68140-2	2	154	4.4	181	5.1	196	5.6	3.00	76	3.00	76	7.24	184	8.58	218	17.80	452
3-FW-E2-90	68150-2	2	138	4.0	162	4.6	182	5.2	3.00	76	3.00	76	7.24	184	8.58	218	17.80	452
3.75-FW-E1	68160	1	250	7.1	290	5.4	325	9.2	3.75	95	3.50	89	8.35	212	9.72	247	15.63	397
3.75-FW-E2	68170	1	225	6.4	260	4.4	280	7.9	3.75	95	3.50	89	8.35	212	9.72	247	15.63	397
3.75-FW-E1-90	68157	2	212	6.0	250	7.1	277	7.8	3.75	95	3.50	89	8.35	212	9.72	247	18.5	470
3.75-FW-E2-90	68167	2	188	5.3	220	6.2	250	7.1	3.75	95	3.50	89	8.35	212	9.72	247	18.5	470
4.5-FW-E1	68175	1	375	10.6	425	12.0	475	13.5	4.50	114	4.00	102	10.60	268	11.9	302	19.13	486
4.5-FW-E2	68175-1	1	325	9.2	375	10.6	425	12.0	4.50	114	4.00	102	10.60	268	11.9	302	19.13	486
6-FW-E1	68178	1	600	17.0	685	19.4	770	21.8	6.00	152	5.00	127	12.20	309	13.54	344	22.00	560
6-FW-E2	68179	1	500	14.2	565	16.0	630	17.8	6.00	152	5.00	127	12.20	309	13.54	344	22.00	560
7-FW-E1	68182	1	800	22.7	910	25.8	1060	30.0	7.00	178	6.00	152	15.50	394	16.80	427	21.50	545
7-FW-E2	68185	1	710	20.1	830	23.5	960	27.2	7.00	178	6.00	152	15.50	394	16.80	427	21.50	545

FW Series Design

Features and Options



FW Series Parts List



MODEL / PART NUMBER

Description	2s-FW	2-FW	2.5-FW	3-FW	3.75-FW	4.5-FW	6-FW	7-FW
1 Filter Cap	68110-1	68120-1	68132-1	68140-1	68160-1	68175-1	68633	68645
2 Primary Element	2s-E1 68300	2-E1 68310	2.5-E1 68315	3-E1 68320	3.75-E1 68330	4.5-E1 68332	6-E1 68630	7-E1 68638
3 Safety Element	2s-E2 68340	2-E2 68350	2.5-E2 68355	3-E2 68360	3.75-E2 68370	4.5-E2 68372	6-E2 68631	7-E2 68645
4 External Ejector	68211	68210	68210	68210	68210	68210	68210	68210
5 Clamp	68214	68214	68214	68214	68214	68214	68214	68214
6 Clamp Hinge	68215	68215	68215	68215	68215	68215	68215	68215
7 Metal Bracket	68230	68235	68238	68240	68245	68241	68178-1	68182-1
<i>Options</i>								
8 Internal Ejector	68212	68213	68213	68213	68213	68213	68213	68213
9 Plastic Bracket	68250	68251	68252	68253	68254	N/A	N/A	N/A