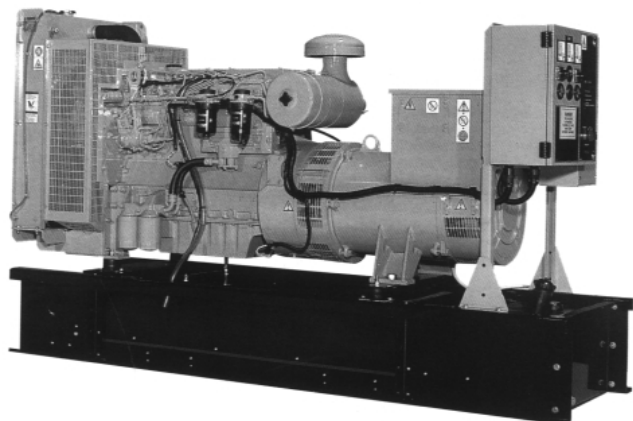


Exclusively from your Caterpillar® dealer



**STANDBY 90-150 kW**  
**PRIME 82.4-114 kW**  
**60 Hz**

Model	Standby kW (kVA)	Prime kW (kVA)
D90P1	90 (112.5)	82.4 (103)
D100P1	100 (125)	90 (112.5)
D100P2*	100 (125)	90 (112.5)
D125P1	125 (156.3)	114 (142.5)
D125P2*	125 (156.3)	114 (142.5)
D150P1	150 (187.5)	N/A

\*EPA Approved, Emissions Certified

## FEATURES

### GENERATOR SET

- Complete system designed and built at ISO 9001 certified facilities
- Factory tested to design specifications at full load conditions

### ENGINE

- Governor, electronic (D125P1, D125P2, D150P1)
- Governor, mechanical (D90P1, D100P1, D100P2)
- Electrical system, 12 VDC
- Cartridge type filters
- Battery(s), rack and cables
- Coolant and lube drains piped to edge of base

### GENERATOR

- Insulation system, class H
- Drip proof alternator air intake (NEMA 2, IP23)
- Electrical design in accordance with BS5000 Part 99, IEC34-1, VDE0530, UTE51100, NEMA MG-1.22

### CONTROL SYSTEM

- 2001 Autostart control panel
- Vibration isolated NEMA 1 enclosure with lockable hinged door
- DC and AC wiring looms

### MOUNTING ARRANGEMENT

- Heavy-duty fabricated steel base with lifting points
- Directly mounted 10 dB(A) silencer
- Complete OSHA guarding
- Flexible fuel lines to base with NPT connections
- Anti-vibration pads to ensure vibration isolation
- Stub-up pipe ready for connection to silencer pipework

### COOLING SYSTEM

- Radiator and cooling fan complete with protective guards
- Standard ambient temperatures up to 122° F (50° C)

### CIRCUIT BREAKER

- UL/CSA listed
- 3-pole with solid neutral
- NEMA 1 steel enclosure, vibration isolated
- Electrical stub-up area directly below circuit breaker

### AUTOMATIC VOLTAGE REGULATOR

- Voltage within  $\pm 0.5\%$  at steady state from no load to full load
- Provides fast recovery from transient load changes

### EQUIPMENT FINISH

- All electroplated hardware
- Anticorrosive paint protection
- High gloss polyurethane paint for durability and scuff resistance

### QUALITY STANDARDS

- BS4999, BS5000, BS5514, IEC34, VDE0530, NEMA MG-1.22, NFPA 110 (with optional equipment)

### DOCUMENTATION

- Operation and maintenance manuals provided
- Wiring diagrams included

### WARRANTY

- 12 months from date of initial start-up or 18 months from shipping, whichever occurs first

Materials and specifications are subject to change without notice.

**STANDBY 90 - 150 kW**  
**PRIME 82.4 - 114 kW**  
**60 Hz**

**OLYMPIAN™**

*Exclusively from your Caterpillar® dealer*

**OPTIONAL EQUIPMENT\***

**ENCLOSURE**

- B Series weather protective enclosure (includes internal silencer system and 8-hour single-walled fuel tank)
  - Single point lift
  - Panel viewing window
  - External emergency stop pushbutton
- Sound attenuated enclosure (includes internal silencer system)
- Super sound attenuated enclosure (includes internal silencer system) (D90P1, D100P1, D100P2)

**SILENCER SYSTEM — OPEN UNIT**

- Level 1 “residential”
- Level 2 “critical”
- Level 3 “super critical”
- Mounting kit
- Through-wall installation kits

**ENGINE**

- Electronic governor (fully adjustable)
- Battery heater
- Lube oil drain pump
- High lube oil temperature shutdown
- Lube oil sump heater

**CIRCUIT BREAKER**

- Auxiliary voltfree contacts
- Shunt trip (100+ amp breakers)

**GENERATOR**

- Anti-condensation heater
- Permanent magnet generator
- AREP excitation system
- Alternator upgrade 1 size

**CONTROL SYSTEM**

- No control system
- 4001 Series Autostart control panel
- 4001E Series Autostart control panel
- Access 4000 digital control panel

**FUEL SYSTEM**

- Single-walled plastic fuel tank
- UL listed closed top-diked skid-mounted fuel tank base (12/24-hour capacity) with fuel alarm (low level/leak detected)
- Critical high fuel alarm
- Critical low fuel level shutdown
- Skidbase in lieu of tankbase on enclosed sets
- Manual fuel pump

**REMOTE ANNUNCIATORS**

- 8- and 16-channel remote annunciator panel (supplied loose)
- Remote annunciator upgrade normal/run control switch
- Remote annunciator upgrade lockdown emergency stop button

**COOLING SYSTEM**

- Coolant heater
- Low coolant temperature alarm
- Low coolant level shutdown
- Radiator transition flange

**MISCELLANEOUS ACCESSORIES**

- Toolkit
- Additional operator’s manual pack
- Special enclosure color
- CSA certification
- French language labels

**EXTENDED WARRANTY**

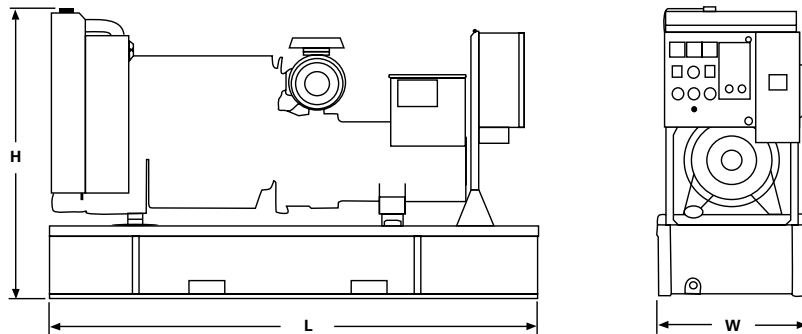
- 24 months
  - 36 months
  - 48 months
  - 60 months
- (See warranty policy for details of coverage)

**TESTING**

- Factory witness test (restricted to 6 hours — full load, 1.0 pf)

\*Some options may not be available on all models. Not all options are listed.

**GENERATOR SET DIMENSIONS AND WEIGHTS**



Model	Length in (mm)	Width in (mm)	Height in (mm)	Weight lbs (kg)**
D90P1	94.5 (2400)	29.5 (750)	56.5 (1435)	2695 (1222)
D100P1	94.5 (2400)	29.5 (750)	56.5 (1435)	2695 (1222)
D100P2	94.5 (2400)	29.5 (750)	56.5 (1435)	2695 (1222)
D125P1	106 (2700)	35.4 (900)	57.5 (1460)	3124 (1417)
D125P2	106 (2700)	35.4 (900)	57.5 (1460)	3124 (1417)
D150P1	106 (2700)	35.4 (900)	57.5 (1460)	3124 (1417)

**NOTE:** General configuration not to be used for installation. See specific dimensional drawings for detail.

\*\*Includes oil and coolant

**STANDBY 90 - 150 kW**  
**PRIME 82.4 - 114 kW**  
**60 Hz**

**OLYMPIAN™**

*Exclusively from your Caterpillar® dealer*

**SPECIFICATIONS**



**GENERATOR**

Voltage Regulation ..... ±0.5% at steady state from no load to full load  
 Frequency ..... ±0.8% for constant load, no load to full load  
 Waveform Distortion..... THD < 1.8%, at no load  
 Radio Interference ..... Compliance with BS800 and VDE Class G&N  
 Telephone Interference ..... TIF <50, THF <2%  
 Overspeed Limit..... 2250 rpm  
 Insulation ..... Class H  
 Temperature Rise ..... Within Class H limits  
 Available Voltages..... 277/480, 266/460, 120/240, 127/220, 120/208, 347/600  
 Deration ..... Consult factory for available outputs  
 Ratings ..... At 86° F (30° C), 500 ft. (152.4 m), 60% humidity, 0.8 pf



**ENGINE**

Manufacturer ..... Perkins  
 Type ..... 4-Cycle  
 Cylinder Configuration ..... In-line 6  
 Displacement — cu in (L) ..... 366 (6.0)  
 Bore — in (mm) ..... 3.94 (100.0)  
 Stroke — in (mm) ..... 5.00 (127.0)  
 Compression Ratio  
 D90P1, D100P1, D100P2, D125P1, D150P1 .... 16.0:1  
 D125P2 ..... 17.0:1  
 Governor  
 Type  
 D90P1, D100P1, D100P2..... Mechanical  
 D125P1, D125P2, D150P1 ..... Electronic  
 Class..... A1  
 Piston Speed — ft/sec (m/sec) ..... 25.0 (7.62)  
 Engine speed — rpm..... 1800  
 Air Cleaner Type ..... Dry, replaceable paper element type with restriction indicator  
 Regenerative Power — kW..... 16.2

**D90P1 — 1006TG1A**

Max Power at Rated rpm — hp (kW)  
 Standby..... 152 (113)  
 Prime ..... 136 (102)  
 BMEP — psi (kPa)  
 Standby ..... 183 (1259)  
 Prime ..... 164 (1133)  
 Aspiration ..... Turbocharged

**RATING DEFINITIONS**

**Standby** — Applicable for supplying continuous electrical power (at variable load) in the event of a utility power failure. No overload is permitted on these ratings. The generator is peak rated (as defined in ISO8528-3).

**D100P1 — 1006TG2A**

Max Power at Rated rpm — hp (kW)  
 Standby..... 166 (124)  
 Prime ..... 151 (112)  
 BMEP — psi (kPa)  
 Standby ..... 202 (1393)  
 Prime ..... 182 (1253)  
 Aspiration ..... Turbocharged

**D100P2 — 1006-6T**

Max Power at Rated rpm — hp (kW)  
 Standby..... 166 (124)  
 Prime ..... 150 (112)  
 BMEP — psi (kPa)  
 Standby ..... 200 (1376)  
 Prime ..... 182 (1253)  
 Aspiration ..... Turbocharged

**D125P1 — 1006TAG**

Max Power at Rated rpm — hp (kW)  
 Standby..... 219 (163)  
 Prime ..... 201 (150)  
 BMEP — psi (kPa)  
 Standby ..... 266 (1836)  
 Prime ..... 234 (1610)  
 Aspiration..... Turbocharged, AA Charge

**D125P2 — 1006TA**

Max Power at Rated rpm — hp (kW)  
 Standby..... 216 (162)  
 Prime ..... 197 (147)  
 BMEP — psi (kPa)  
 Standby ..... 262 (1799)  
 Prime ..... 238 (1635)  
 Aspiration..... Turbocharged, AA Charge

**D150P1 — 1006TAG1**

Max Power at Rated rpm — hp (kW)  
 Standby..... 219 (163)  
 Prime ..... N/A  
 BMEP — psi (kPa)  
 Standby ..... 266 (1836)  
 Prime ..... N/A  
 Aspiration ..... Turbocharged, AA Charge Cooled



**CONTROL PANEL**

NEMA 1 steel enclosure with lockable hinged door  
 Vibration isolated mounted Autostart control panel  
 Single location customer connector point  
 Electrical stub-up area directly below control panel

**Prime** — Applicable for supplying continuous electrical power (at variable load) in lieu of commercially purchased power. There is no limitation to the annual hours of operation and the generator set can supply 10 percent overload power for 1 hour in 12 hours.

**Consult your Olympian representative for more information.**

www.CAT-ElectricPower.com

© 2000 Caterpillar  
 All rights reserved.  
 Printed in U.S.A.

**STANDBY 100 kW**  
**PRIME 90 kW**  
**60 Hz**

**OLYMPIAN™**

*Exclusively from your Caterpillar® dealer*

**D100P1 (3-Phase)**

Materials and specifications are subject to change without notice.

Generator Set Technical Data — 1800 rpm/60 Hz		Standby	Prime
<b>Power Rating</b>	kW (kVA)	100 (125.0)	90 (112.5)
<b>Lubricating System</b> Type: Full Pressure Oil Filter: Spin-On, Full Flow Oil Cooler: Watercooled Oil Type Required: API CD 15W-40 Total Oil Capacity Oil Pan	U.S. gal (L) U.S. gal (L)	4.3 (16.1) 3.5 (13.1)	4.3 (16.1) 3.5 (13.1)
<b>Fuel System</b> Generator Set Fuel Consumption 100% Load 75% Load 50% Load	g/hr (L/hr) g/hr (L/hr) g/hr (L/hr)	8.07 (30.53) 6.19 (23.42) 4.48 (16.95)	7.30 (27.63) 5.54 (20.99) 4.01 (15.19)
<b>Engine Electrical System</b> Voltage/Ground: 12/Negative Battery Charging Alternator Ampere Rating	amps	55	55
<b>Cooling System</b> Water Pump Type: Centrifugal Radiator System Capacity Incl. Engine Maximum Coolant Static Head Coolant Flow Rate Minimum Temperature to Engine Temperature Rise Across Engine Heat Rejected to Coolant at Rated Power Total Heat Radiated to Room at Rated Power Radiator Fan Load	U.S. gal (L) ft H <sub>2</sub> O (m H <sub>2</sub> O) U.S. gal/hr (L/hr) °F (°C) °F (°C) Btu/min (kW) Btu/min (kW) hp (kW)	7.3 (27.7) 26.2 (8.0) 2664 (10 080) 158 (70) 13.9 (7.7) 4550 (80.0) 2361 (41.5) 9.8 (7.3)	7.3 (27.7) 26.2 (8.0) 2664 (10 080) 158 (70) 13.9 (7.7) 4095 (72.0) 1917 (33.7) 9.8 (7.3)
<b>Air Requirements</b> Combustion Air Flow Maximum Air Cleaner Restriction Radiator Cooling Air Alternator Cooling Air	cfm (m <sup>3</sup> /min) in H <sub>2</sub> O (kPa) cfm (m <sup>3</sup> /min) cfm (m <sup>3</sup> /min)	257 (7.8) 20 (5.0) 8200 (232) 985 (27.9)	261 (7.4) 20 (5.0) 8200 (232) 985 (27.9)
<b>Exhaust System</b> Maximum Allowable Backpressure Exhaust Flow at Rated kW Exhaust Temperature at Rated kW — Dry Exhaust	in Hg (kPa) cfm (m <sup>3</sup> /min) °F (°C)	1.8 (6.0) 794 (22.5) 1076 (580)	1.8 (6.0) 705 (20.0) 1004 (540)
<b>Generator Set Noise Rating*</b> (Without Attenuation) at 3 ft (1 m)	dB(A)	95	95

Alternator Technical Data		347/600V	277/480V	266/460V	120/240V 120/208V	127/220V
<b>Motor Starting Capability:</b> (kVA) (30% Voltage Dip)	Self Excited	190	190	175	140	167
	PM Excited**	215	215	195	160	180
	AREP Excited	TBA	TBA	TBA	TBA	TBA
<b>Full Load Efficiencies:</b>	Standby	90.5	90.5	90.3	89.3	89.9
	Prime	90.8	90.8	90.6	89.6	90.2
<b>Reactances (per unit):</b>  Reactances shown are applicable to the standby rating.	X <sub>d</sub>	3.94	3.94	4.28	5.23	4.68
	X' <sub>d</sub>	0.155	0.155	0.166	0.199	0.177
	X'' <sub>d</sub>	0.092	0.092	0.100	0.122	0.110
	X <sub>q</sub>	2.36	2.36	2.57	3.14	2.81
	X'' <sub>q</sub>	0.114	0.114	2.124	0.152	0.135
	X <sub>2</sub>	0.103	0.103	0.112	0.137	0.122
	X <sub>0</sub>	0.006	0.006	0.006	0.006	0.006
<b>Time Constants:</b>	t' <sub>d</sub> 0.100 sec	t'' <sub>d</sub> 0.010 sec	t' <sub>do</sub> 2.576 sec	t <sub>a</sub> 0.015 sec		

\* dB(A) levels are for guidance only  
 \*\* With PMG Excited Option AR12